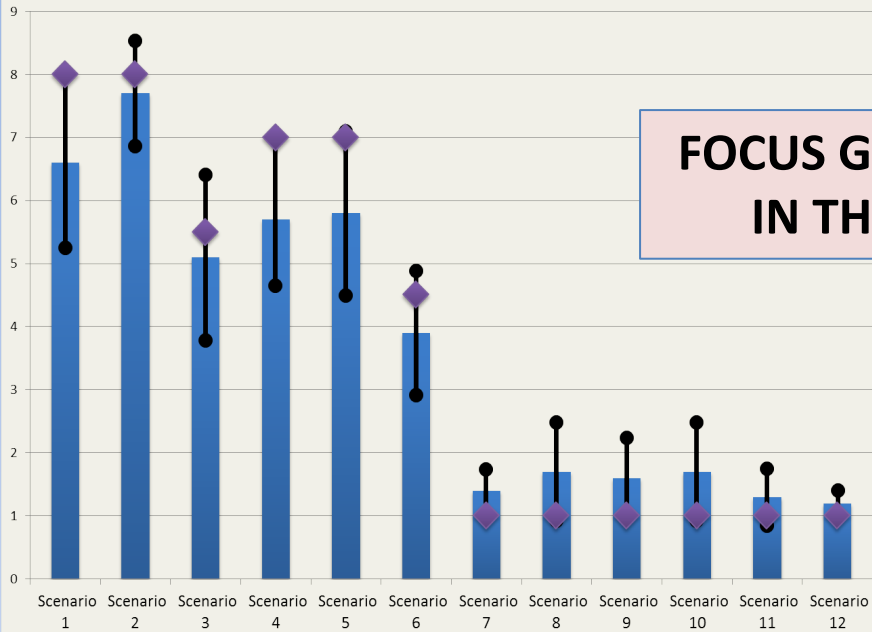


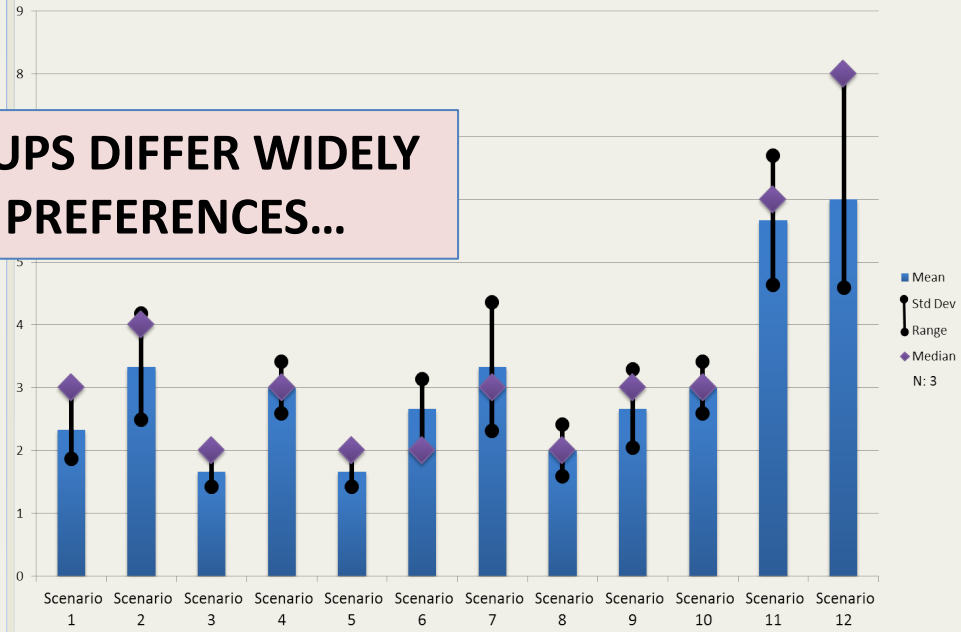
Paducah Gaseous Diffusion
(Uranium Enrichment) Plant
Future Visioning
Community Preference Modeling
Results

SITUATION ON NOVEMBER 1, 2010

**Scenario Scoring
PGDP/USEC Employees**

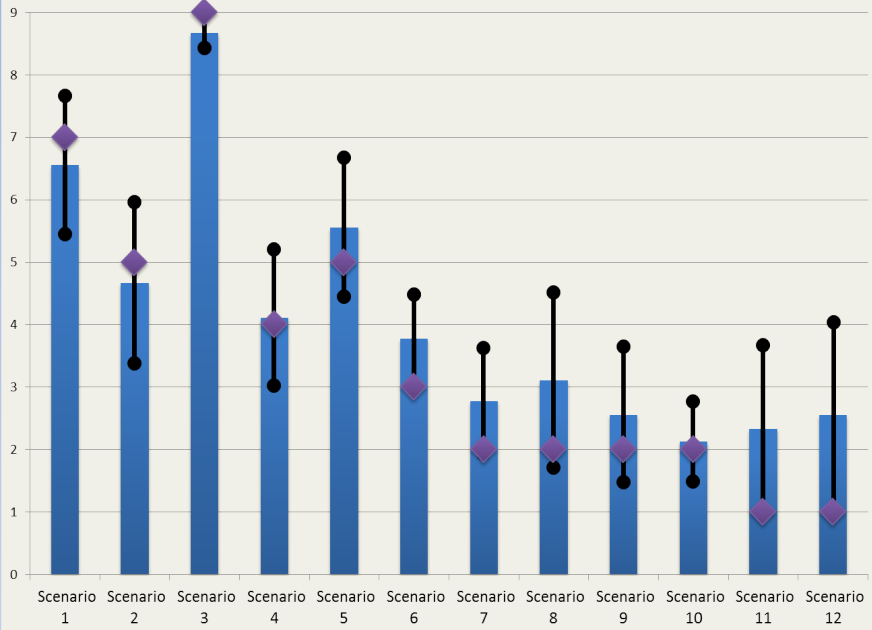


**Scenario Scoring
Education/Healthcare**

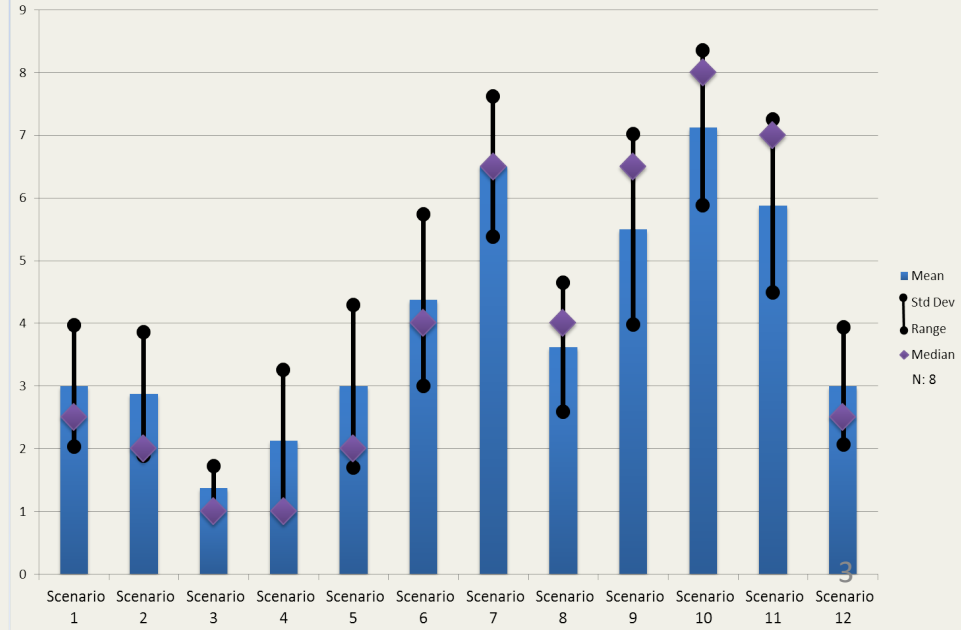


**FOCUS GROUPS DIFFER WIDELY
IN THEIR PREFERENCES...**

**Scenario Scoring
Ballard County Citizens**



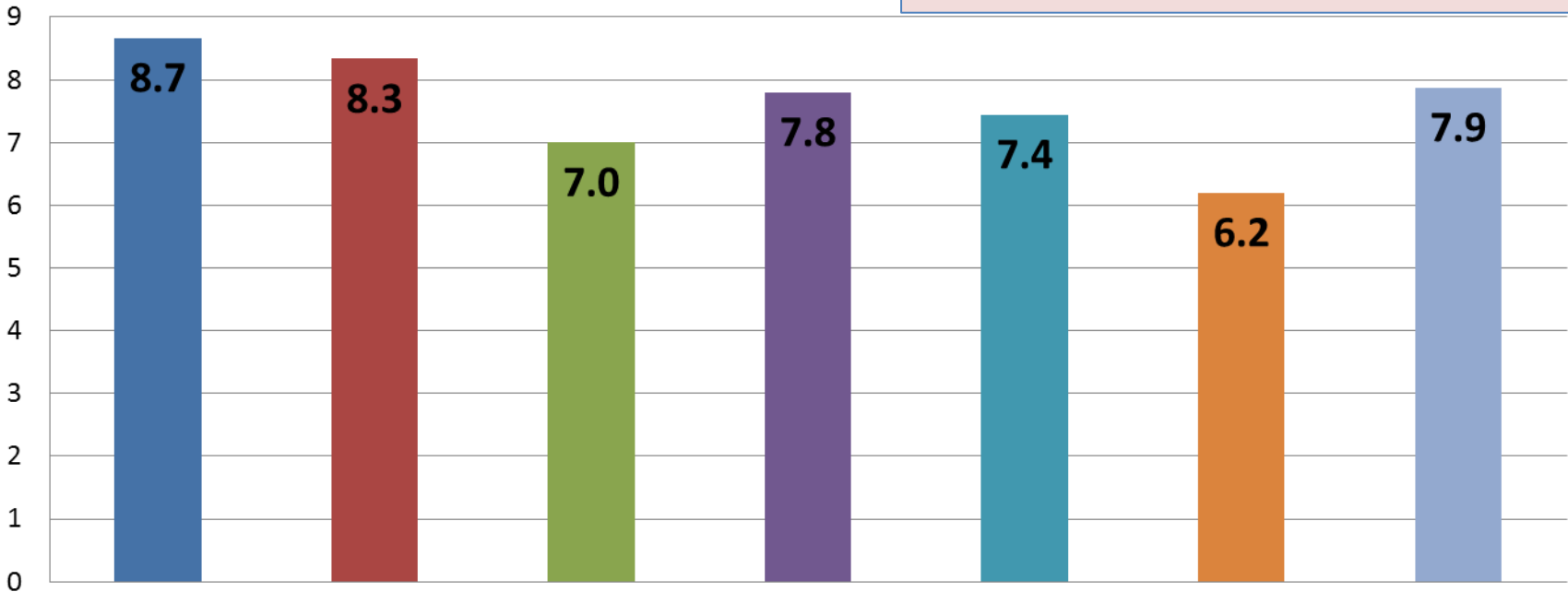
**Scenario Scoring
WKWMA Patrons/Sportspersons**



Process Rating by Meeting

BUT LIKE THE SCENARIO POLLING PROCESS ITSELF

Previous



Ballard County Citizens

Economic Development/Local Government

Education/Healthcare

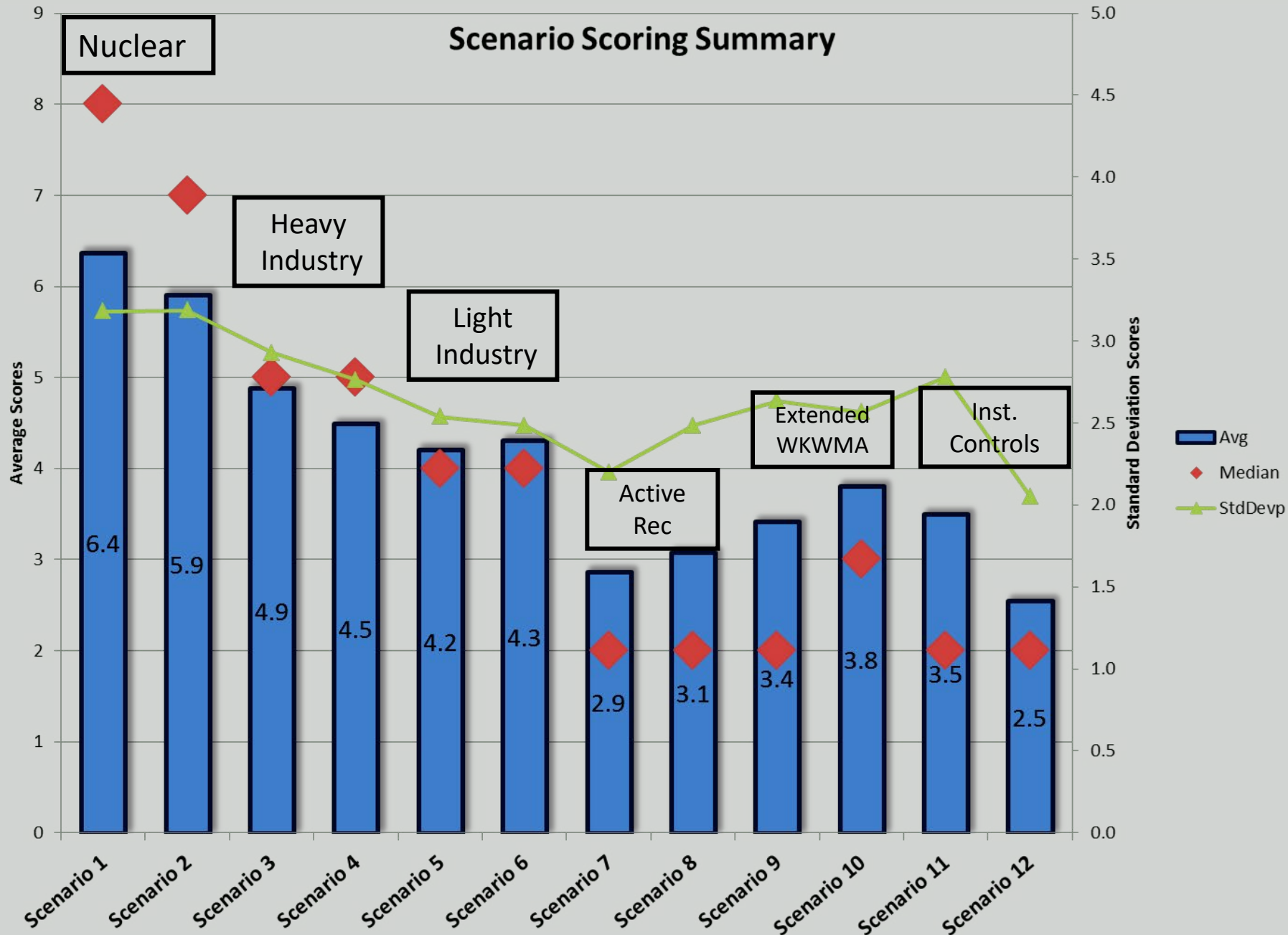
PGDP/USEC Employees

US DOE Employees/Subcontractors

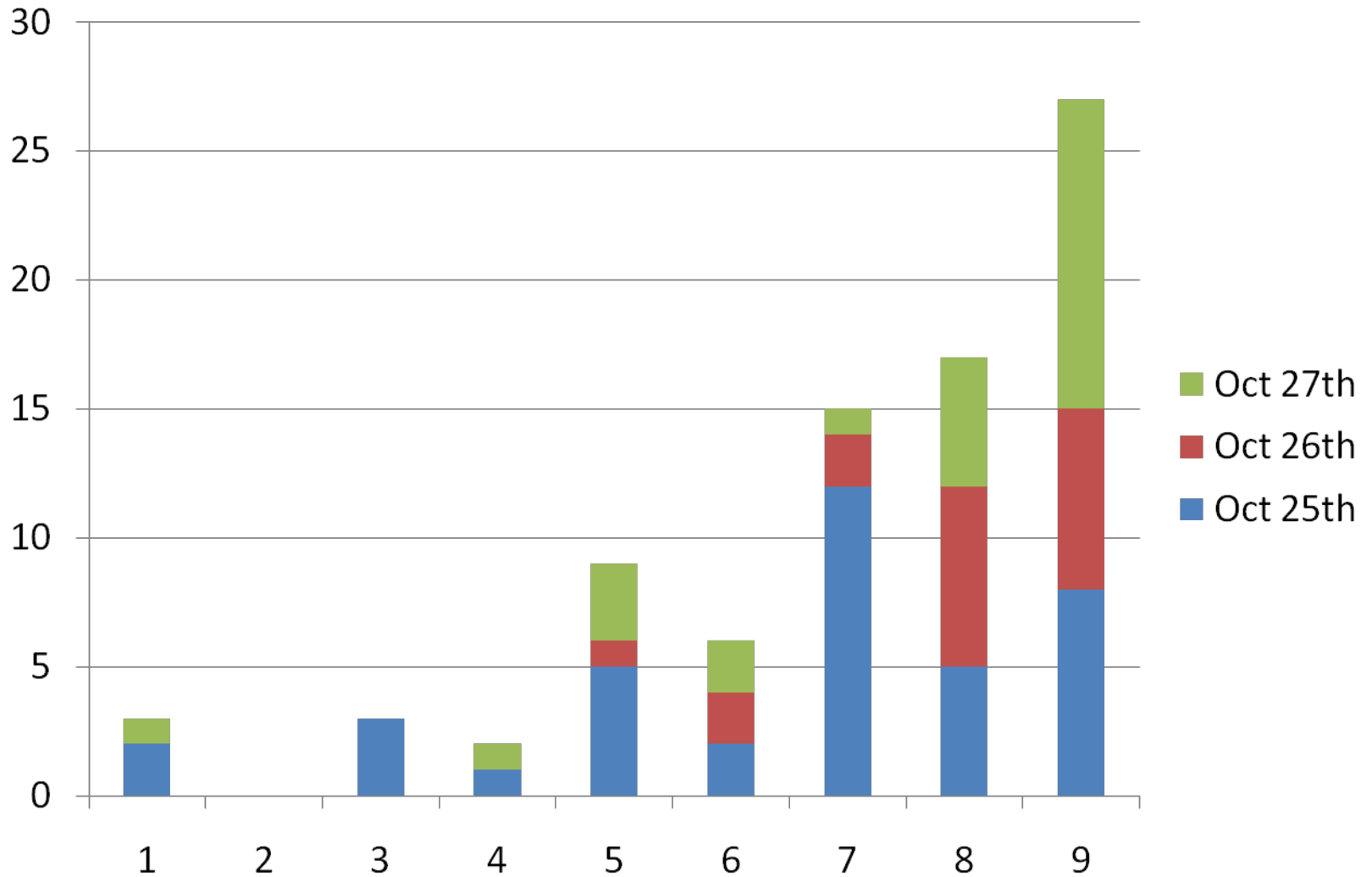
Water Policy District Residents

WKWMA Patrons/Sportspersons

Scenario Scoring Summary

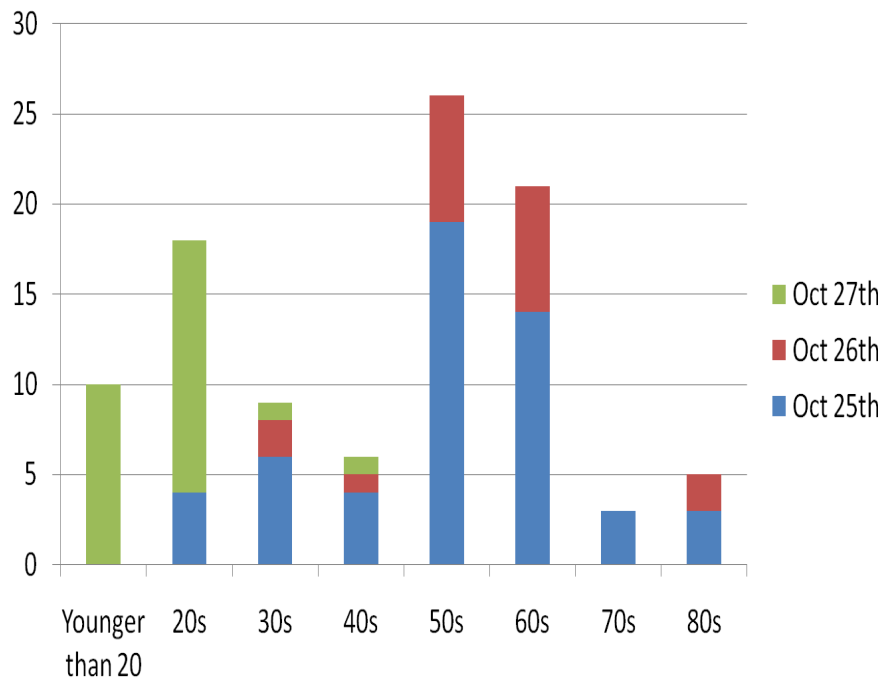


Process Satisfaction



Age Demographics

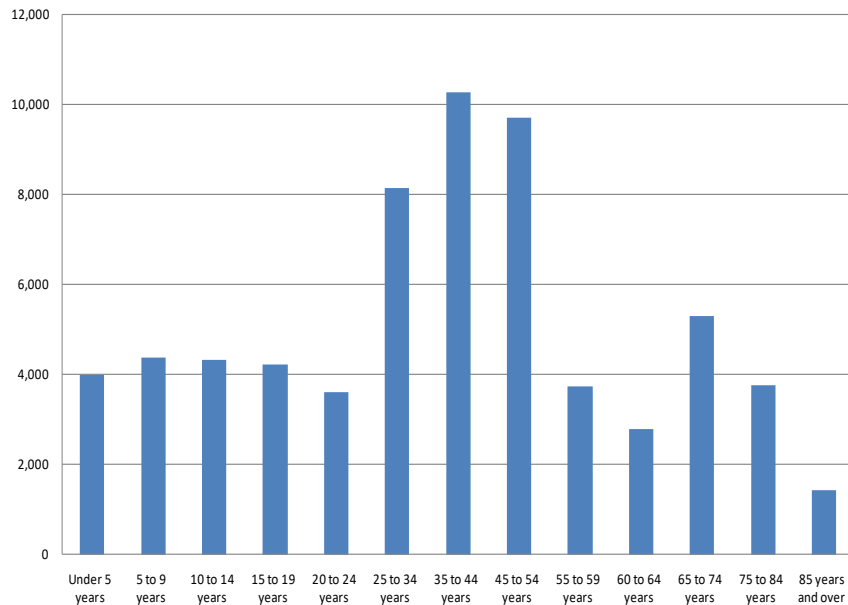
Data collected to date have a gap in the 30s and 40s, which is the largest demographic in both McCracken and Ballard Counties.



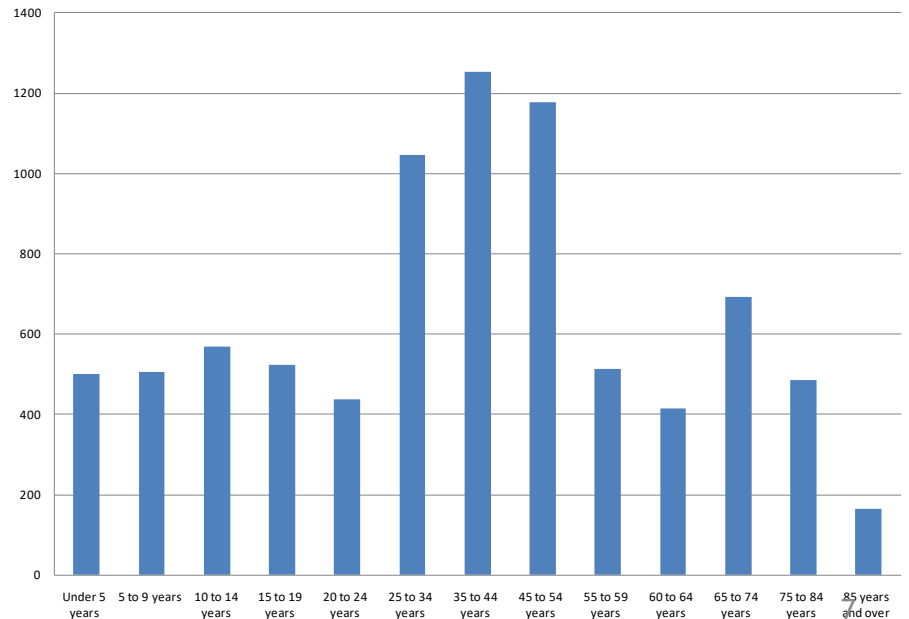
Missing segment
In which jobs and kids
are especially
Important.

Harder for this
demographic to
attend meetings.

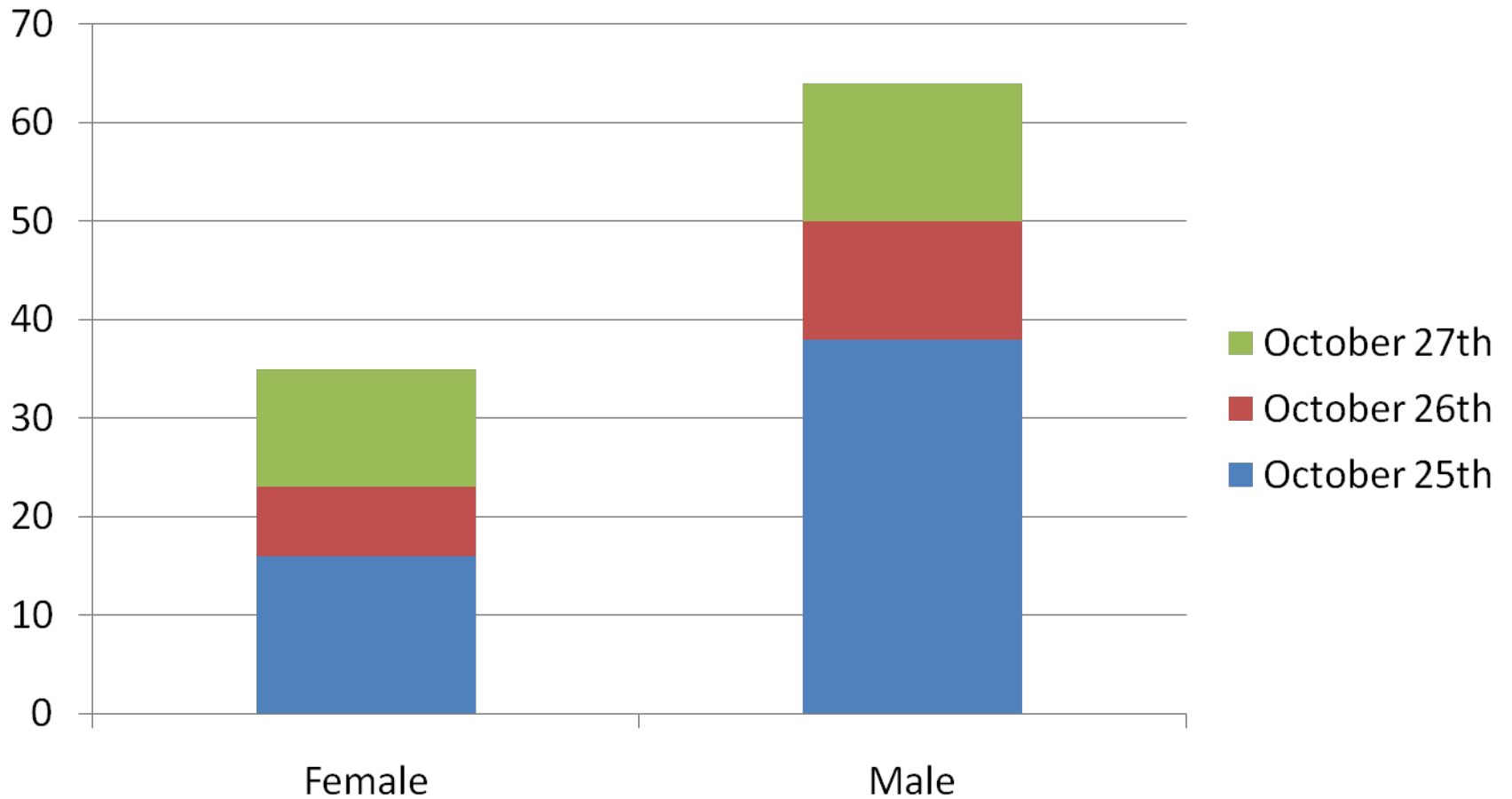
McCracken County Age Distribution



Ballard County Age Distribution



Women/Men?



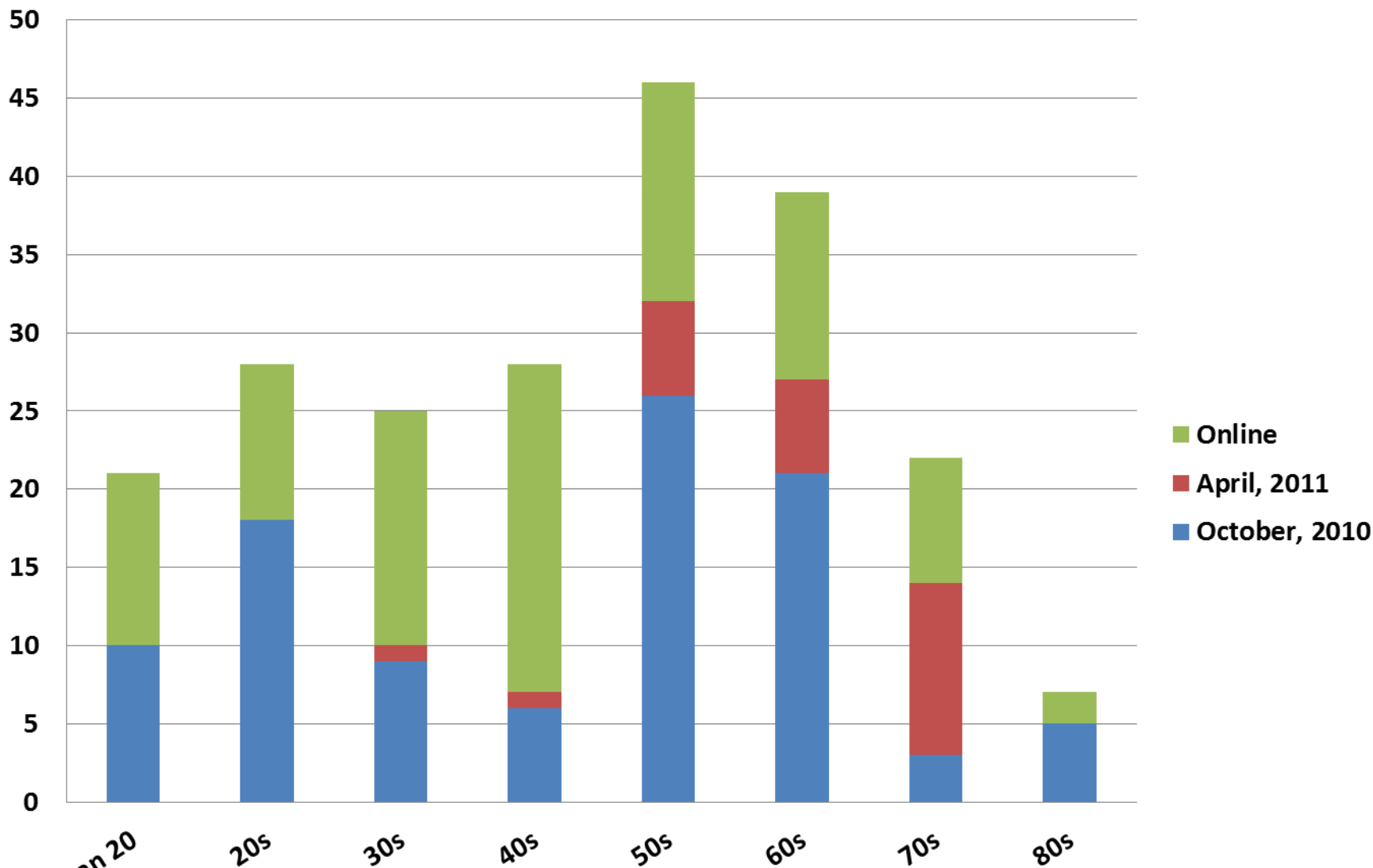
Prepared Draft Report Early 2011

- Pointed Out Data Issues
- Large Standard Deviations
- Bi-Modal Scores
- Difficult to Draw Defensible Conclusion
- SO..
- Prepared Online Polling System
- Made Presentations/Appeals to CAB, Rotary Club
- Scheduled Piggyback Meeting Onto Neighborhood Planning Mtg.
- Began Conversations with School District

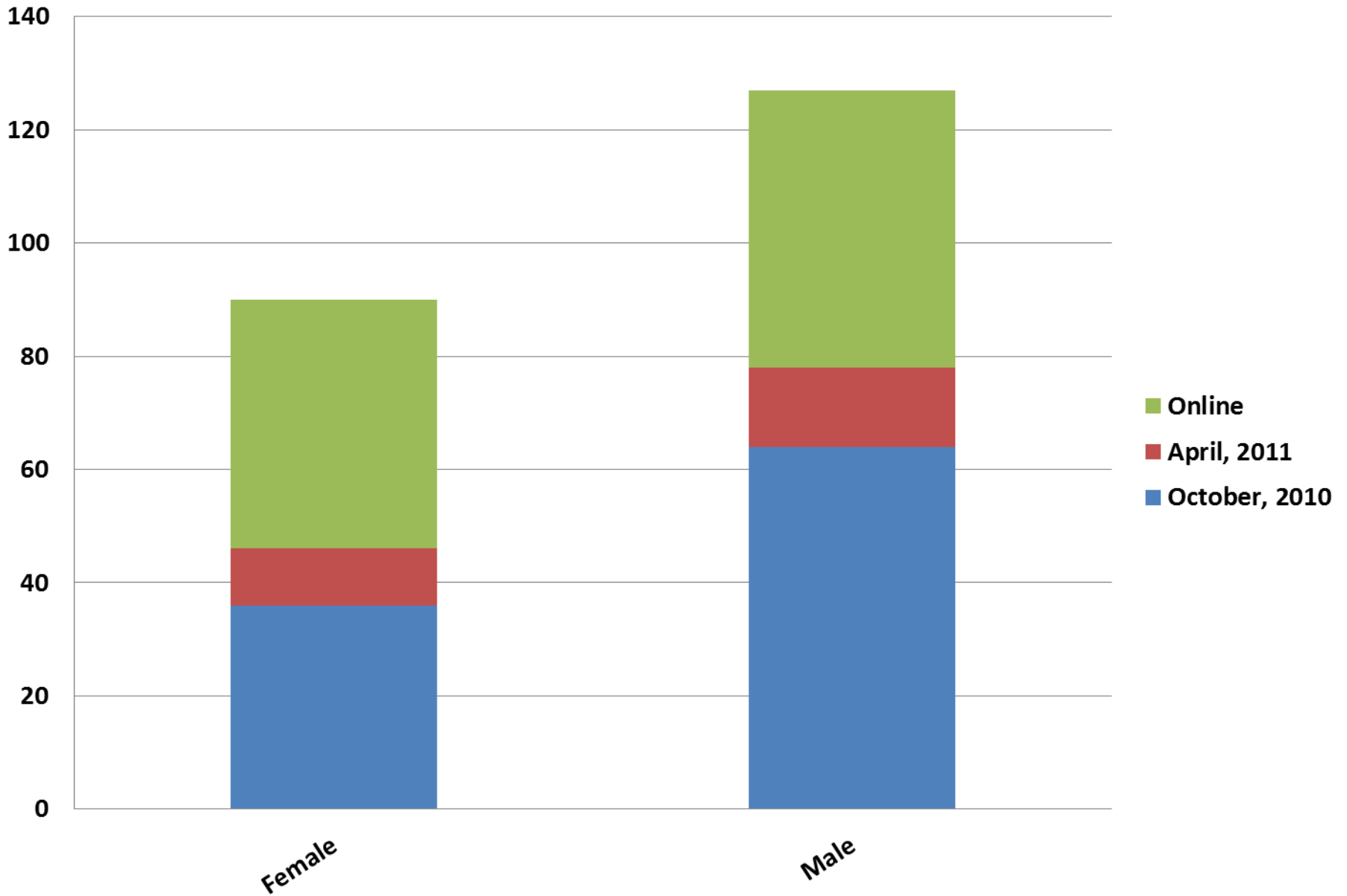
Result

- Gathered A Bit More Data at Neighborhood Meeting, but Demographic Especially Elderly
- CAB and Rotary only produced modest numbers
- Went to Middle Schools
 - Encouraged students to involve their parents
 - Resulted in spike in participation online

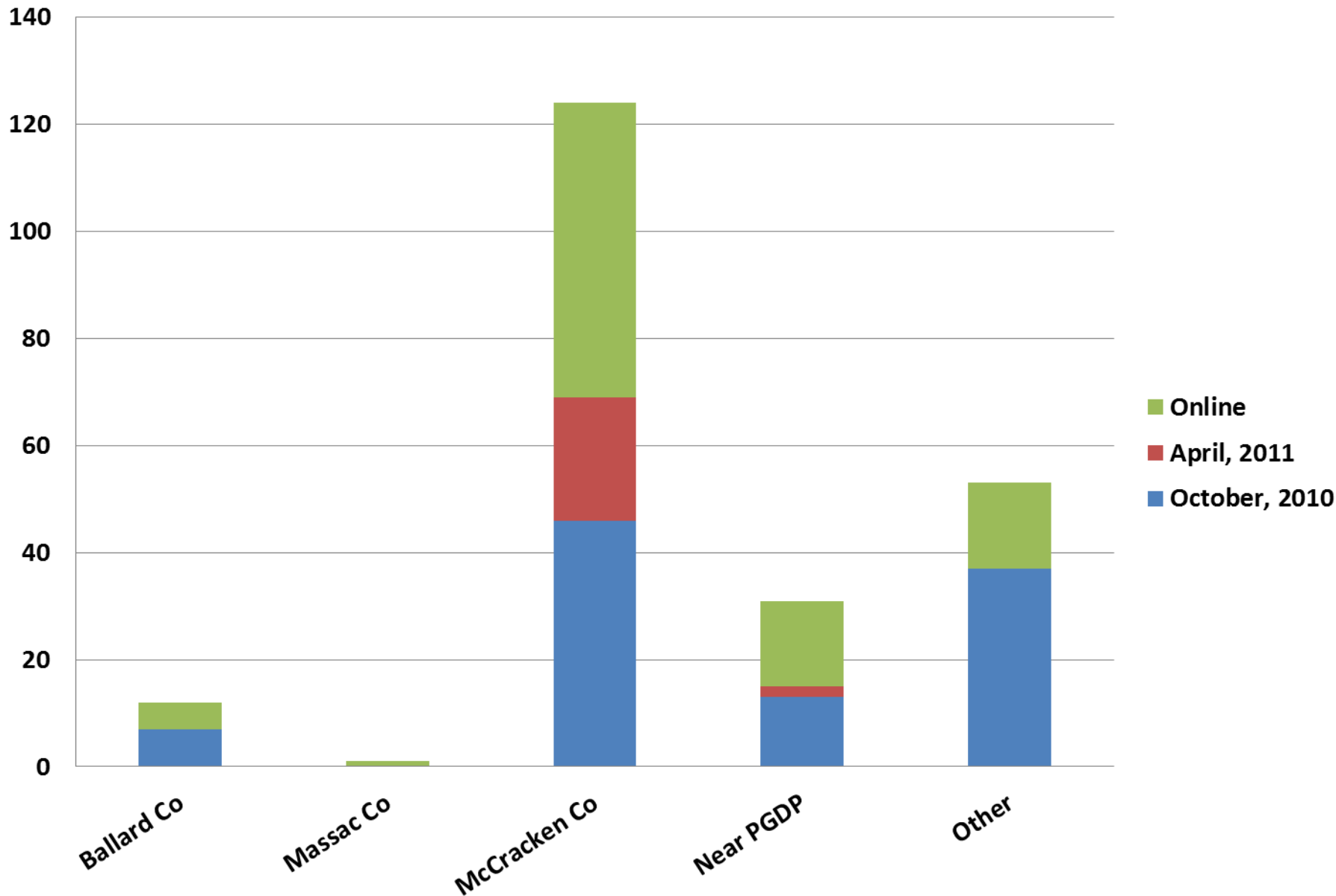
How young are you?



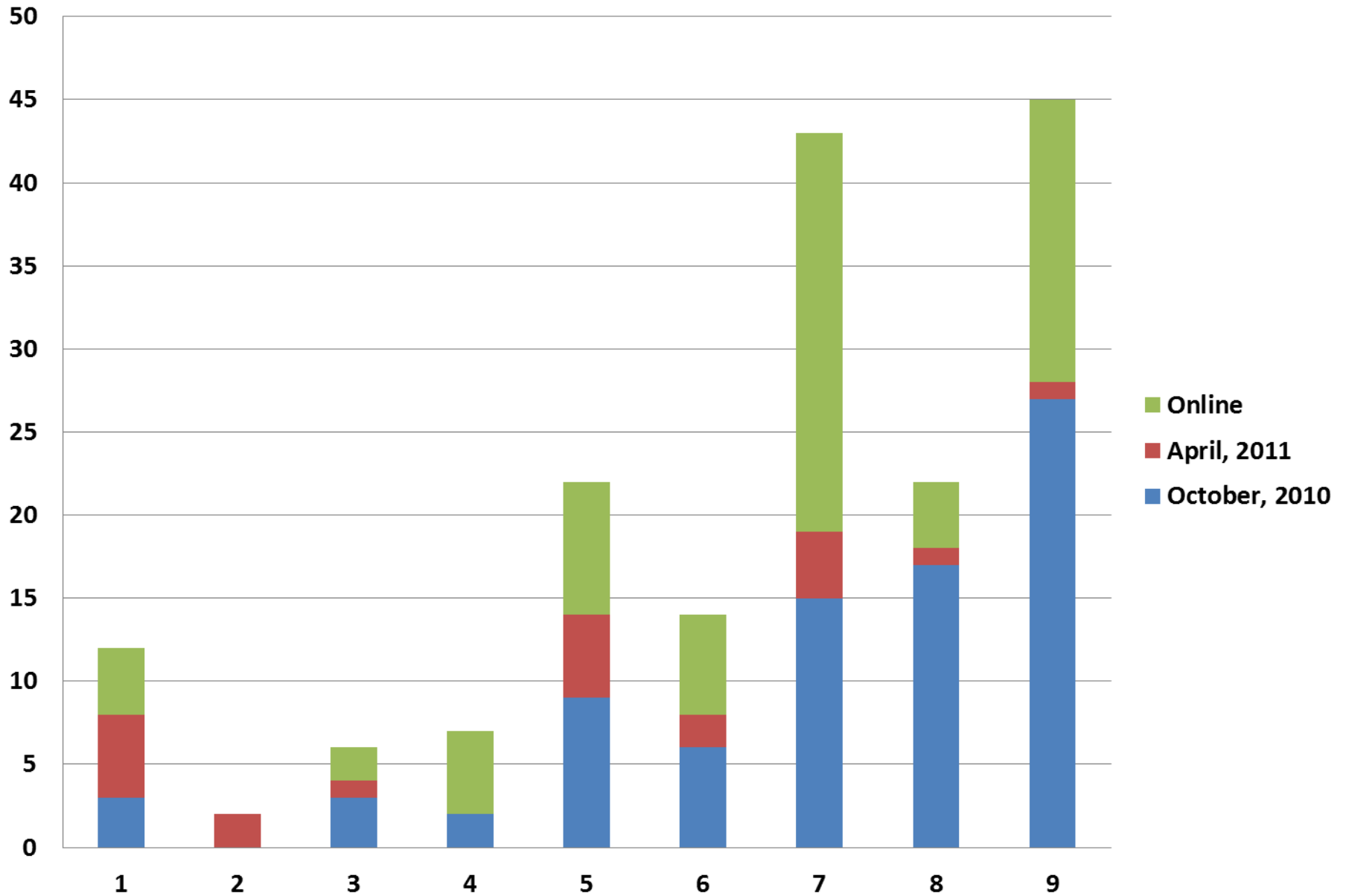
What is your gender?



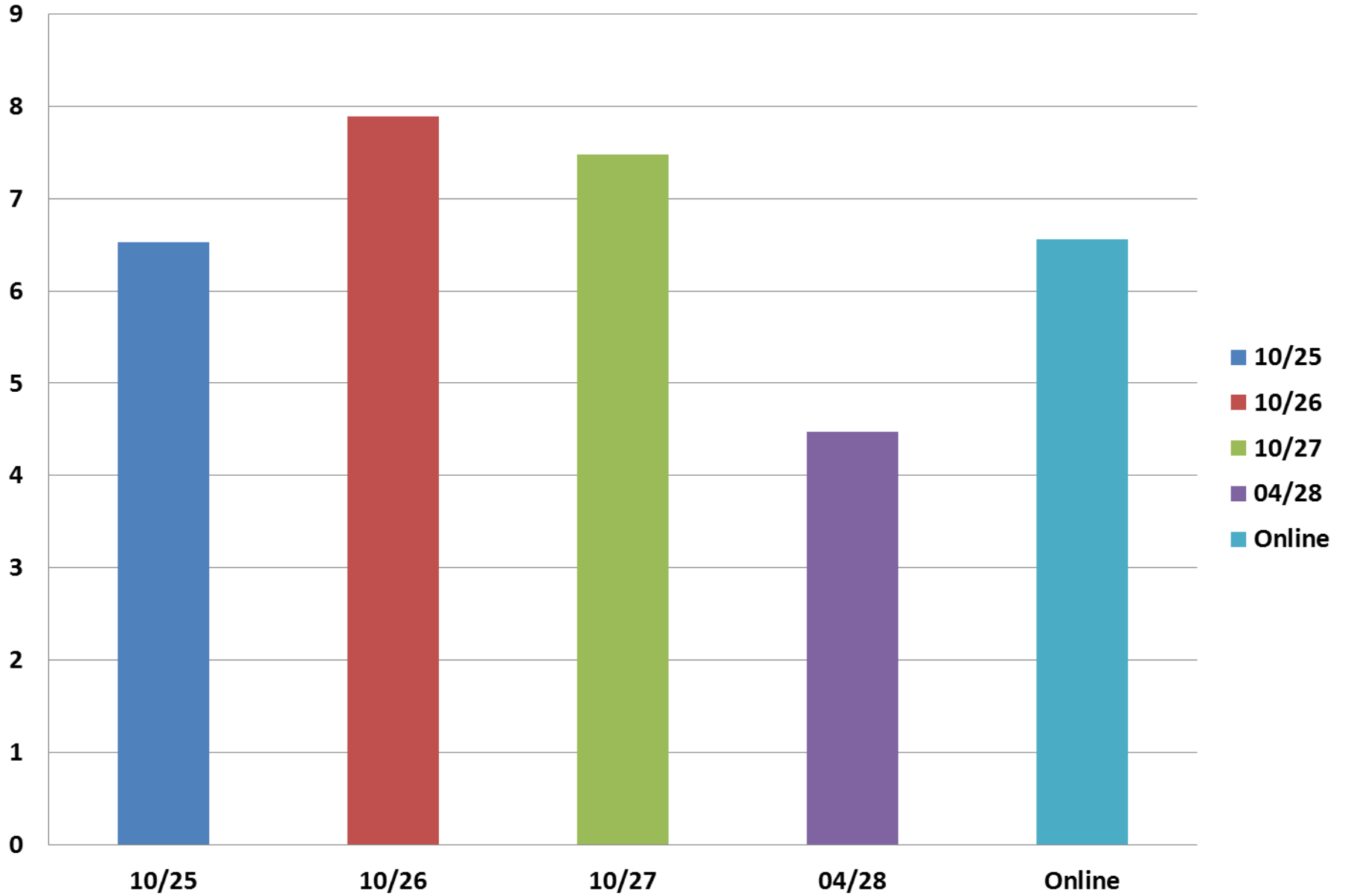
Where do you live?



Please rate your satisfaction with this process?



Process Satisfaction Scoring



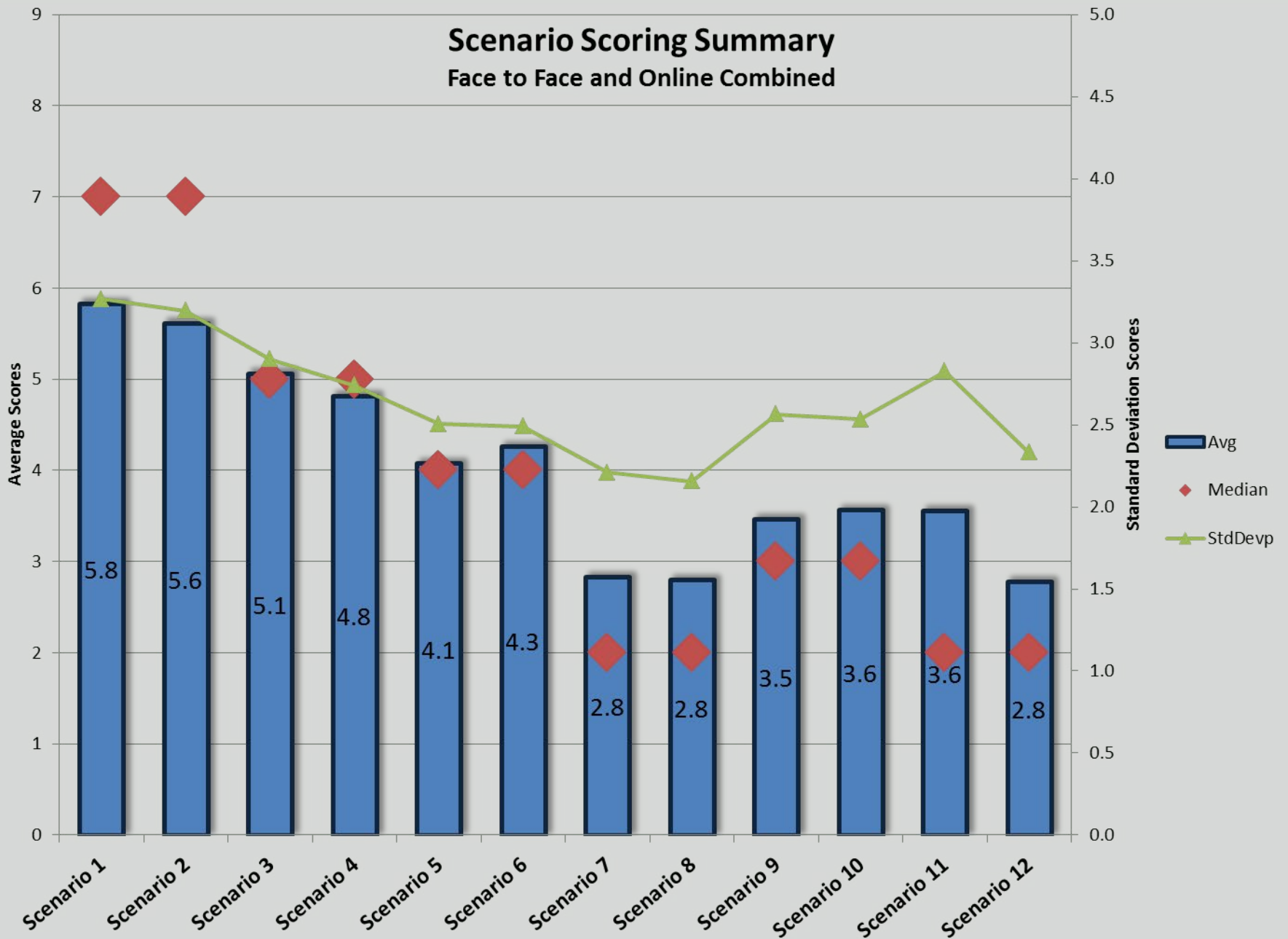
Scenario Scoring Summary

Online Survey



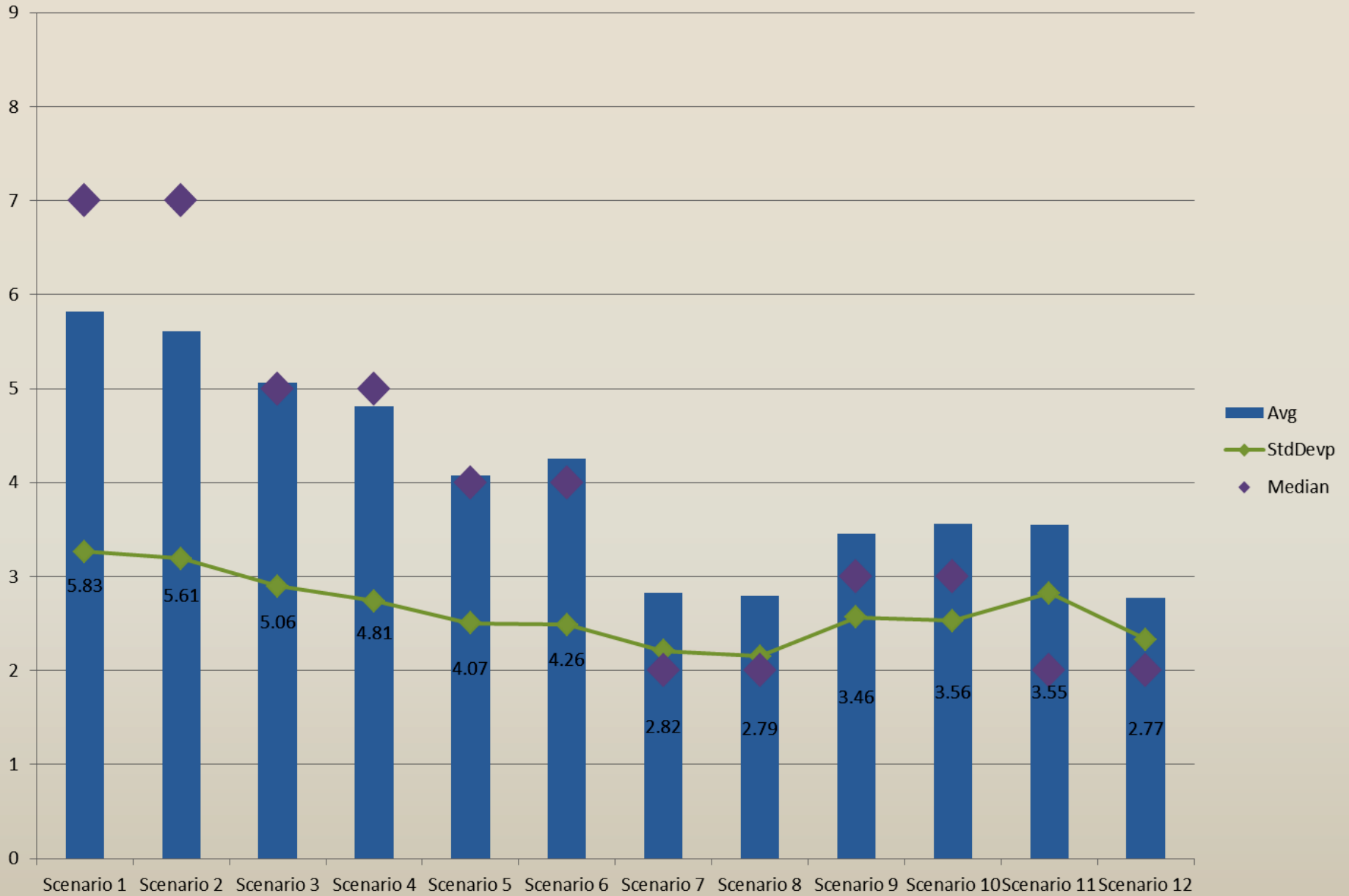
Scenario Scoring Summary

Face to Face and Online Combined

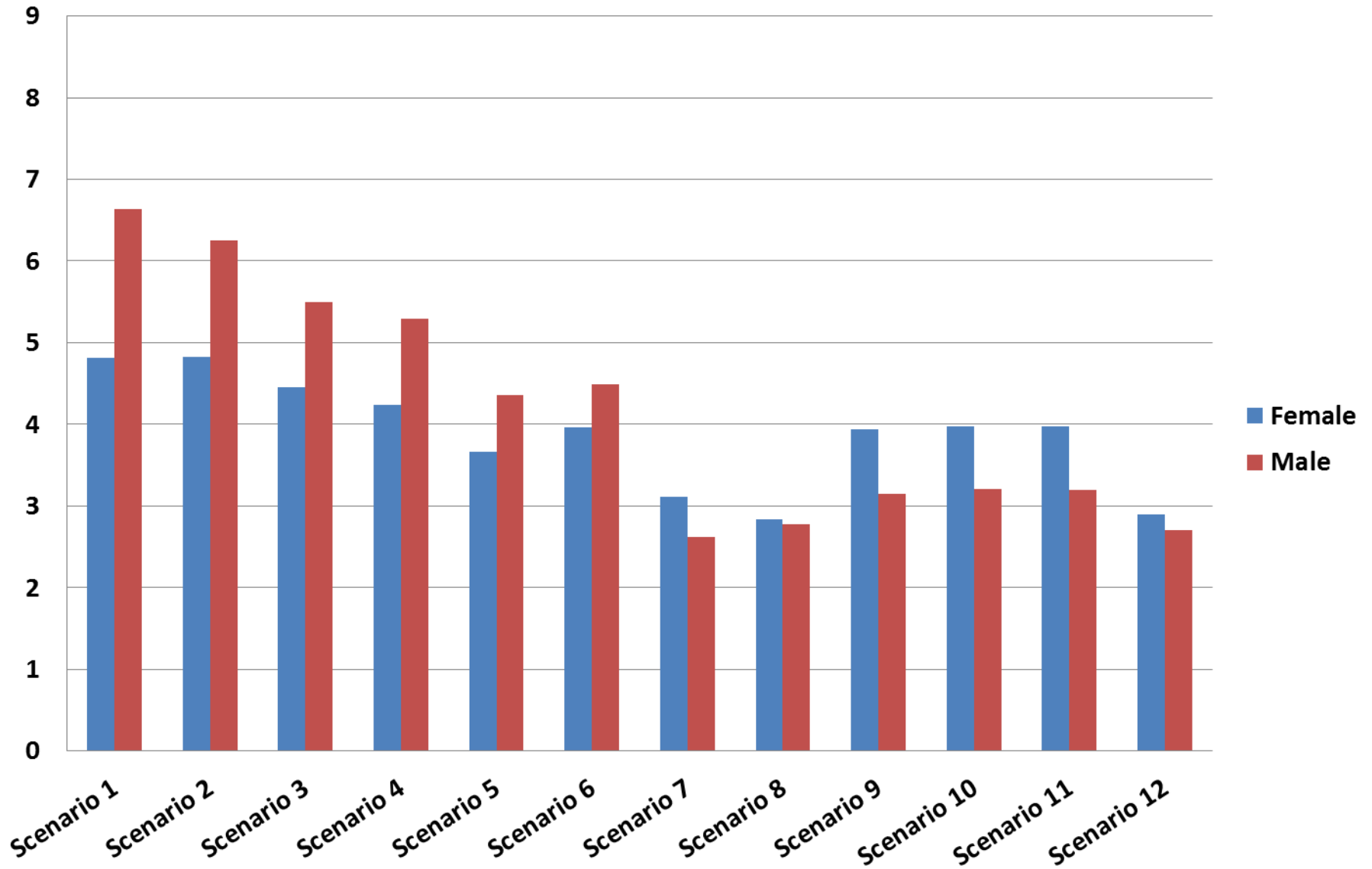


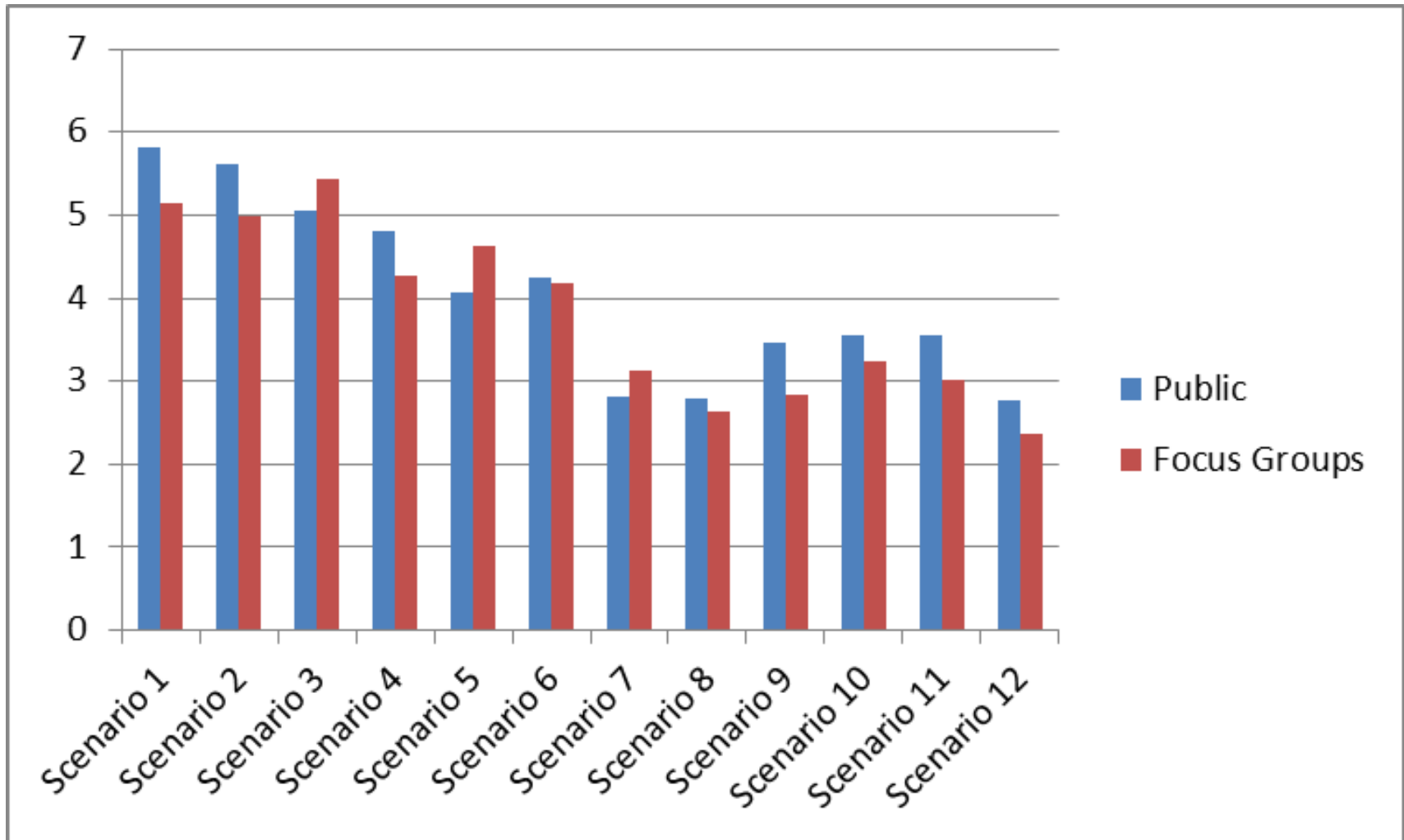
Scenario Scores

All Scores



Scenario Scores by Gender





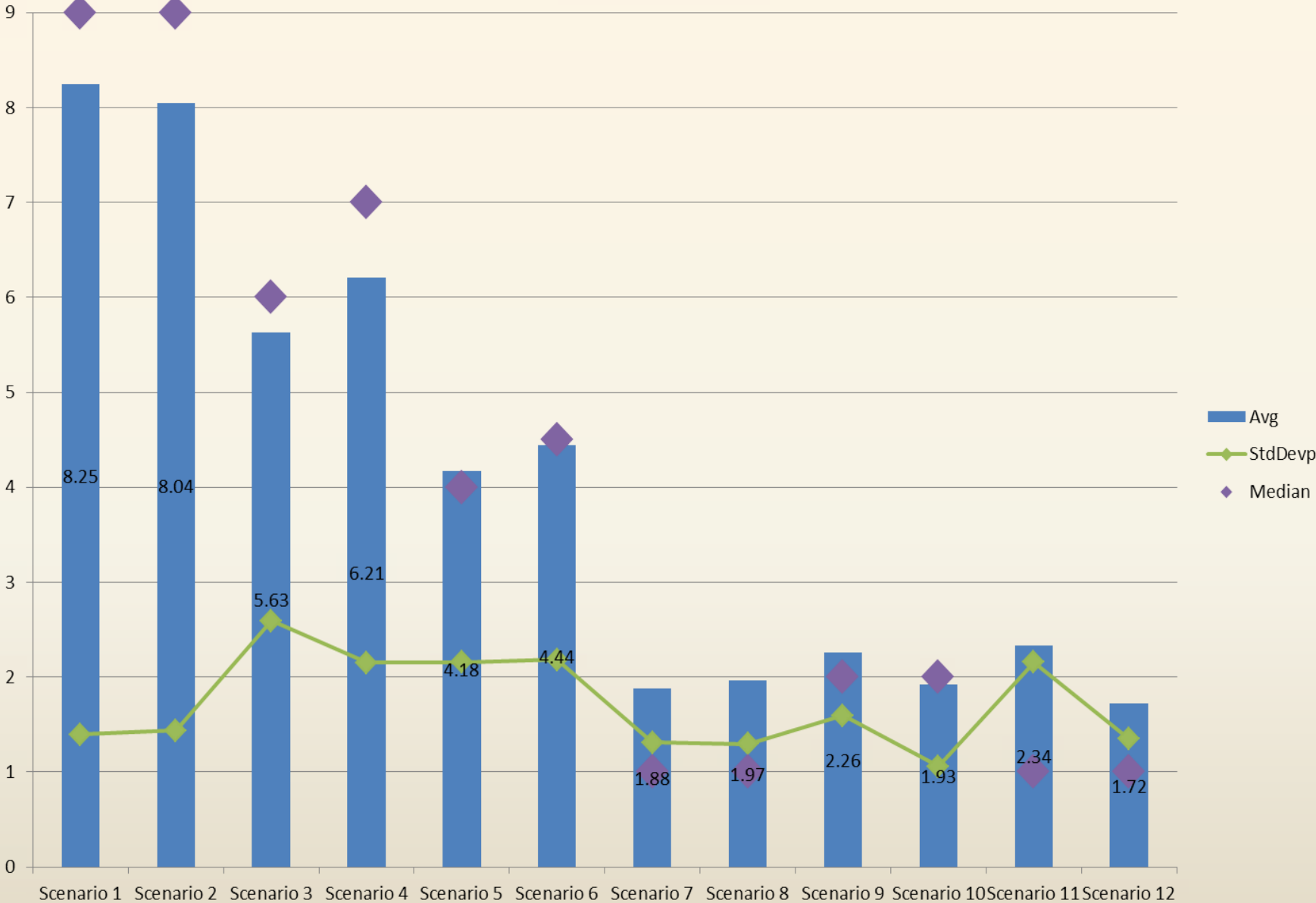
Cluster Analysis

- Minimizes Within-Group Variance
- Maximizes Between-Group Variance
- Resulted in Three Distinct Groups of Scores

Scenario Scores

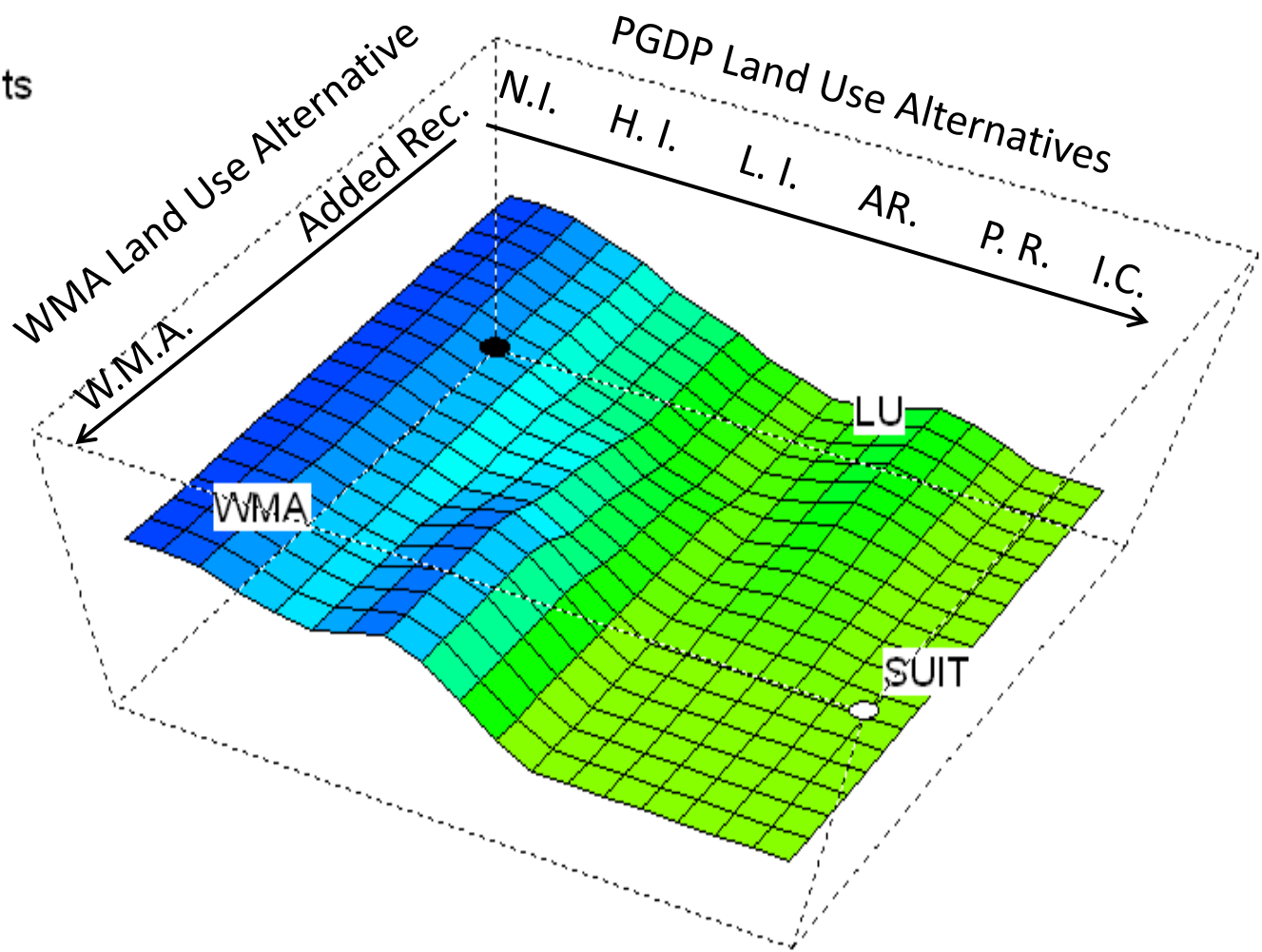
Cluster Group 2

N = 68



Group 2. All Decommissioning Waste Shipped Offsite (No WDA Onsite) and Legacy Waste Fully Excavated.

- In:
- 1. LU: 0 to 1000 No Units
 - 2. WMA: 0 to 1000 No Units
 - 3. DEC: 834 No Units
 - 4. LEG: 250 No Units
- Out:
- SUIT: 0 to 1000 No Units



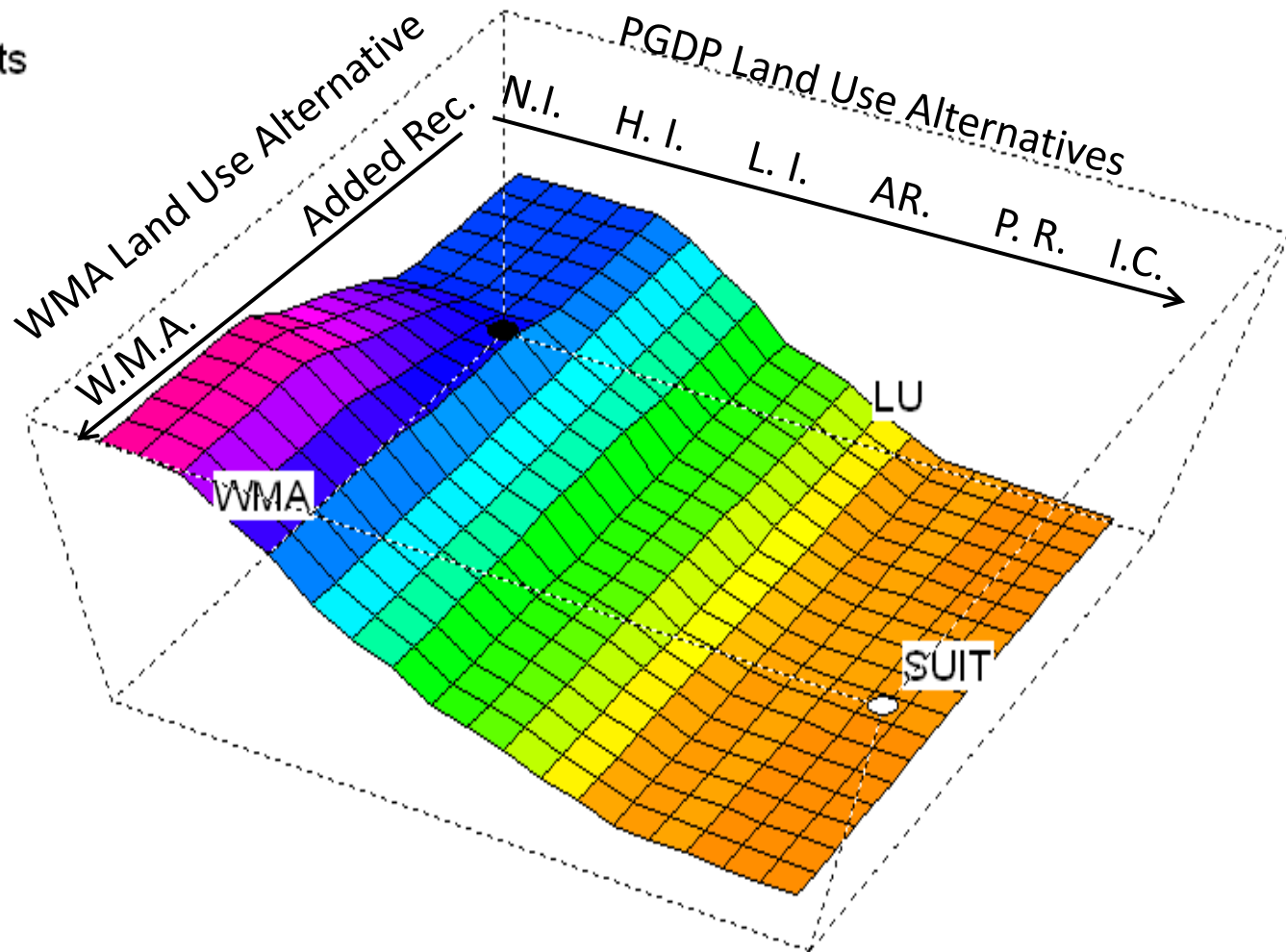
Group 2. All Decommissioning Waste Kept Onsite (Full WDA Onsite) and Legacy Waste Minimum Excavation.

In:

1. LU: 0 to 1000 No Units
2. WMA: 0 to 1000 No Units
3. DEC: 167 No Units
4. LEG: 750 No Units

Out:

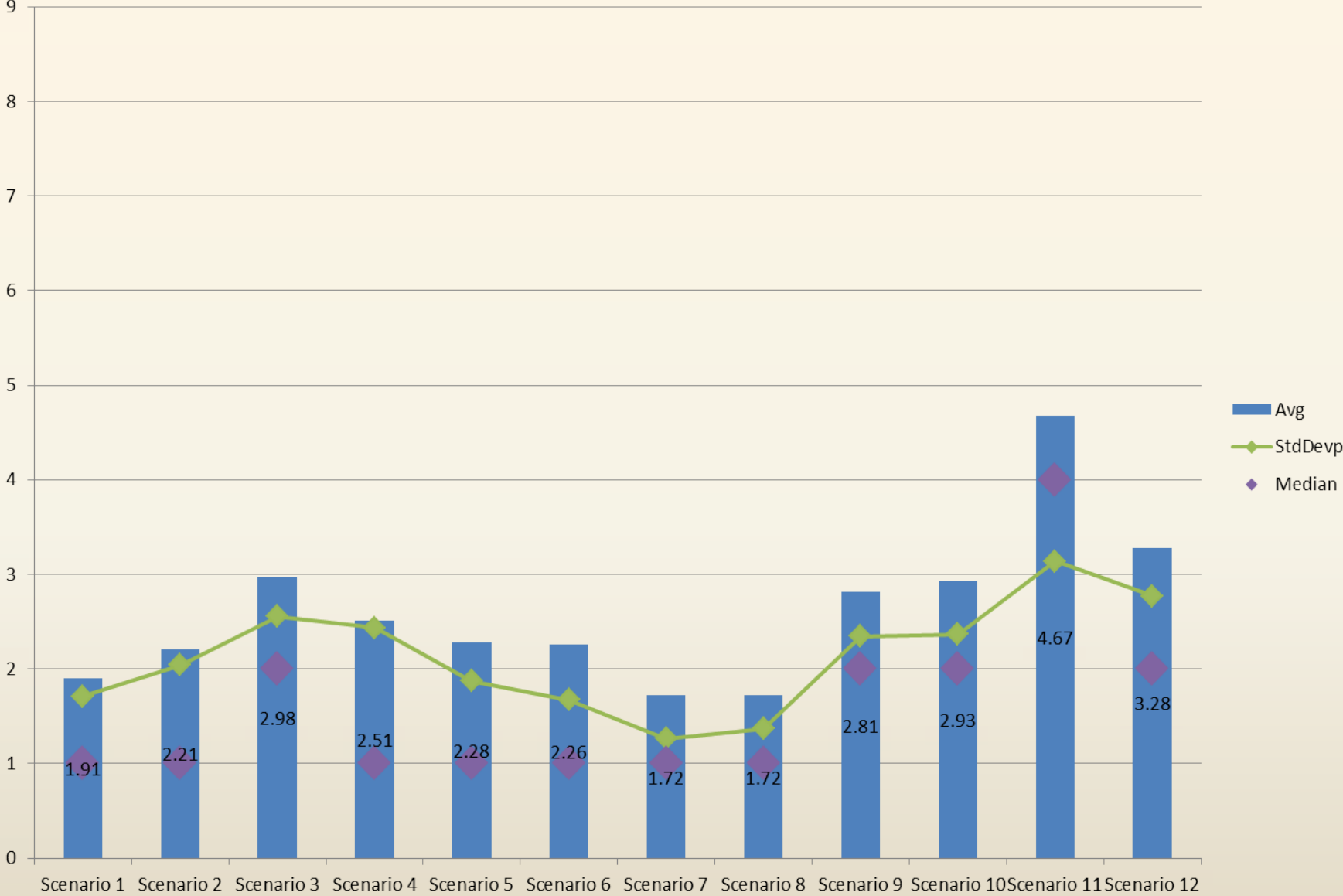
SUIT: 0 to 1000 No Units



Scenario Scores

Cluster Group 3

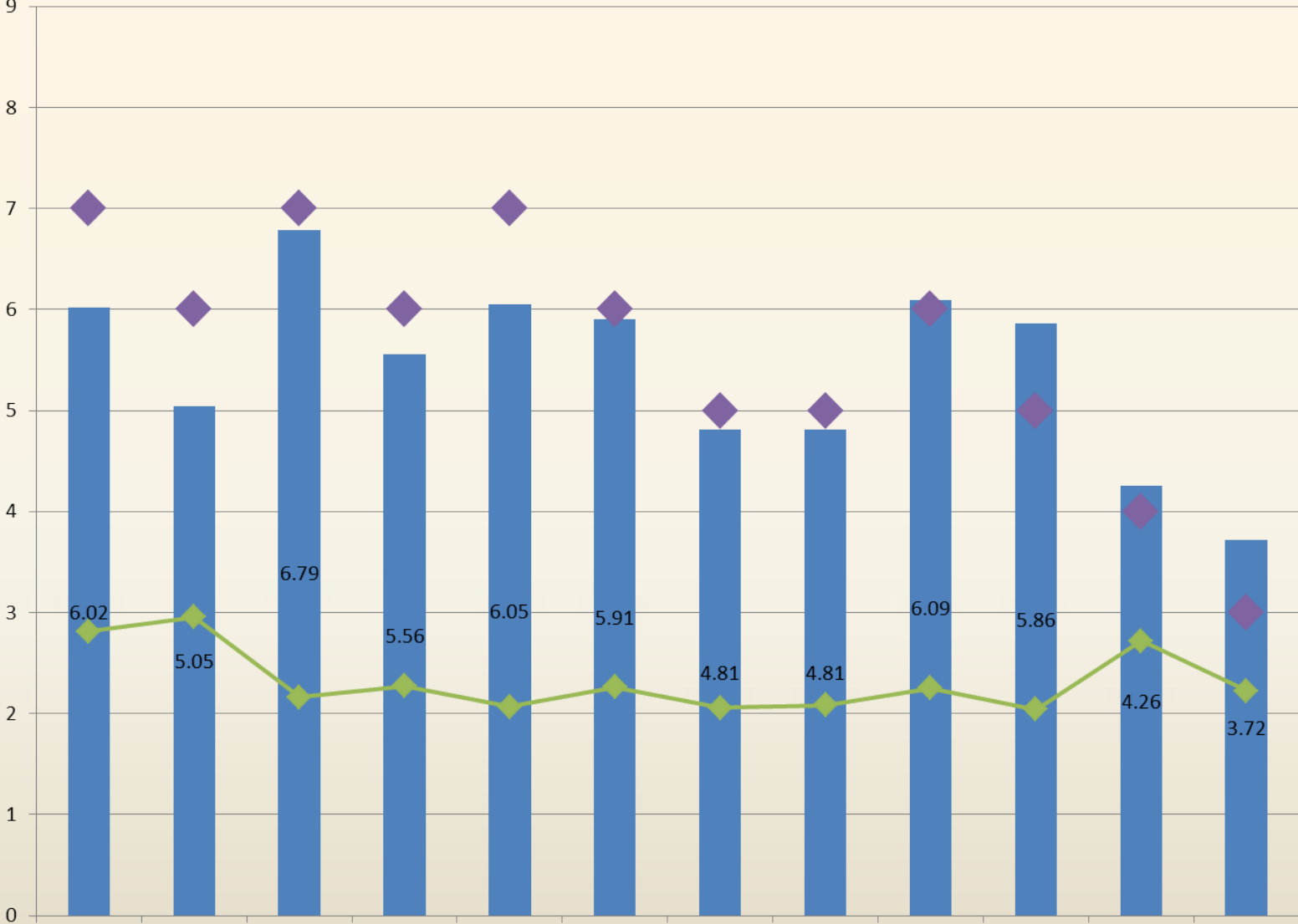
N = 43



Scenario Scores

Cluster Group 1

N = 43



Avg
StdDev
Median

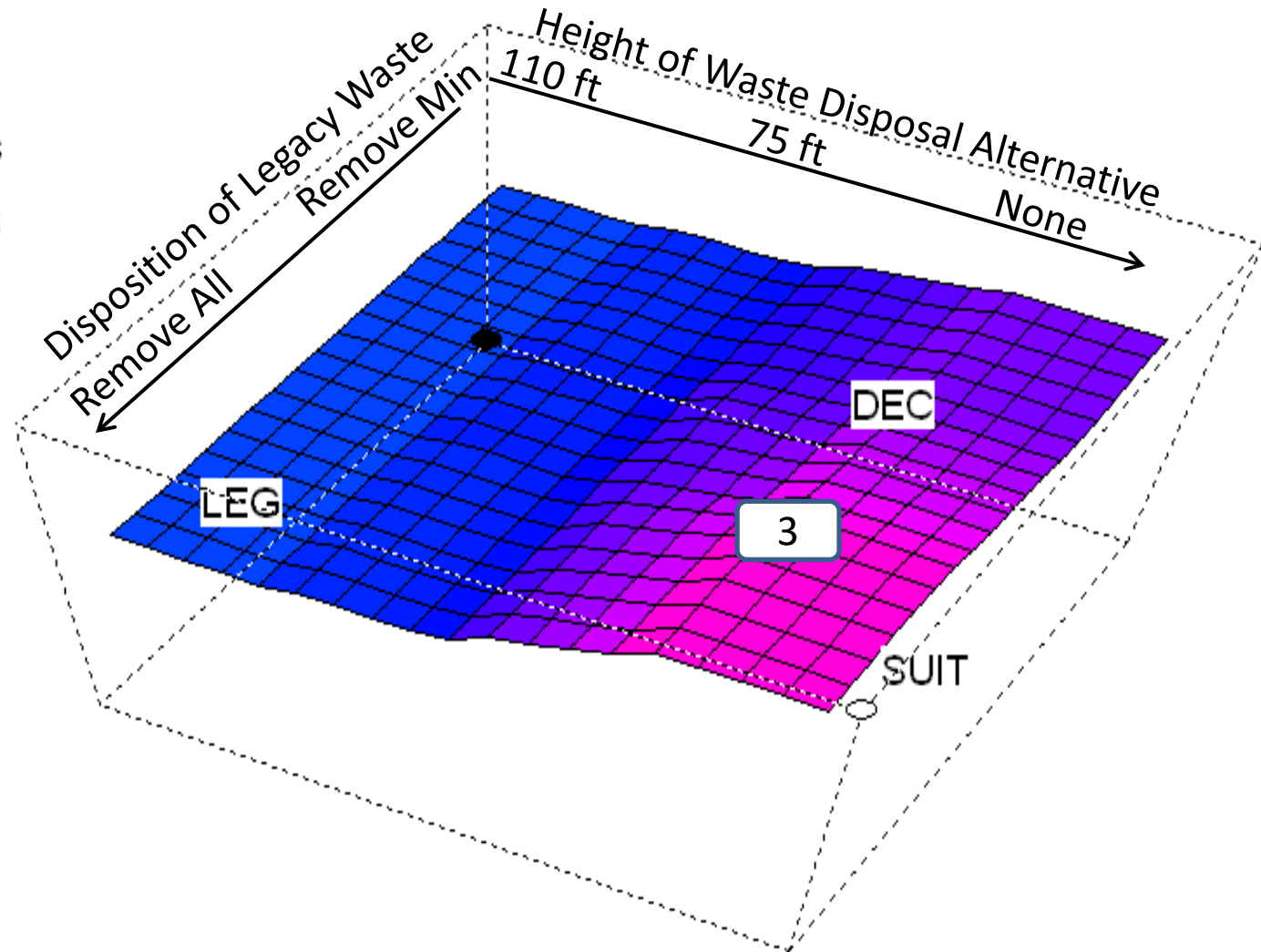
Group 1. Scenario 3. Heavy Industry with Added Recreation Facilities.

In:

1. LU: 250 No Units
2. WMA: 250 No Units
3. DEC: 0 to 1000 No Units
4. LEG: 0 to 1000 No Units

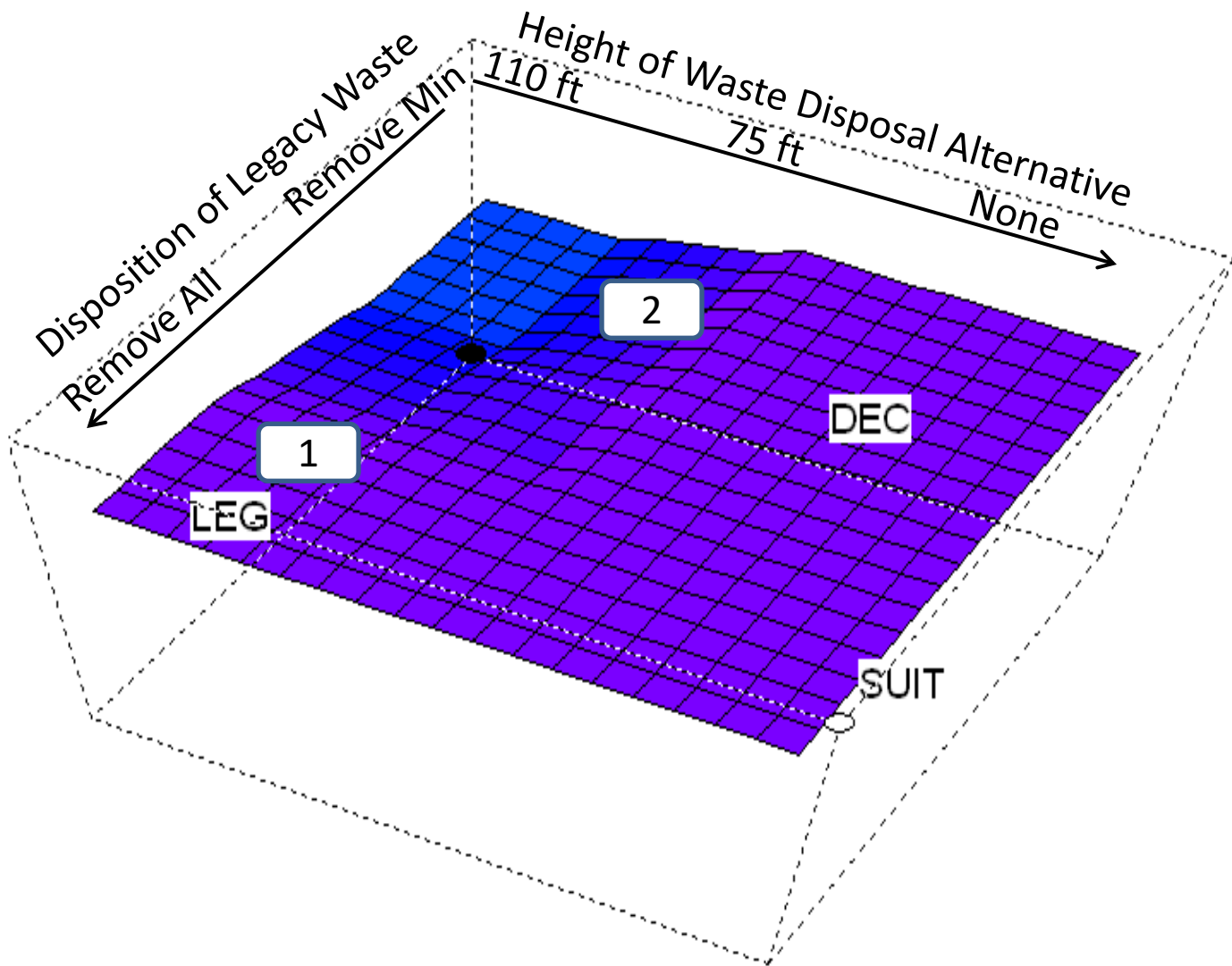
Out:

SUIT: 0 to 1000 No Units



Group 1. Scenarios 1-2. Nuclear Industry. All WMA.

- In:
1. LU: 83 No Units
 2. WMA: 750 No Units
 3. DEC: 0 to 1000 No Units
 4. LEG: 0 to 1000 No Units
- Out:
- SUIT: 0 to 1000 No Units



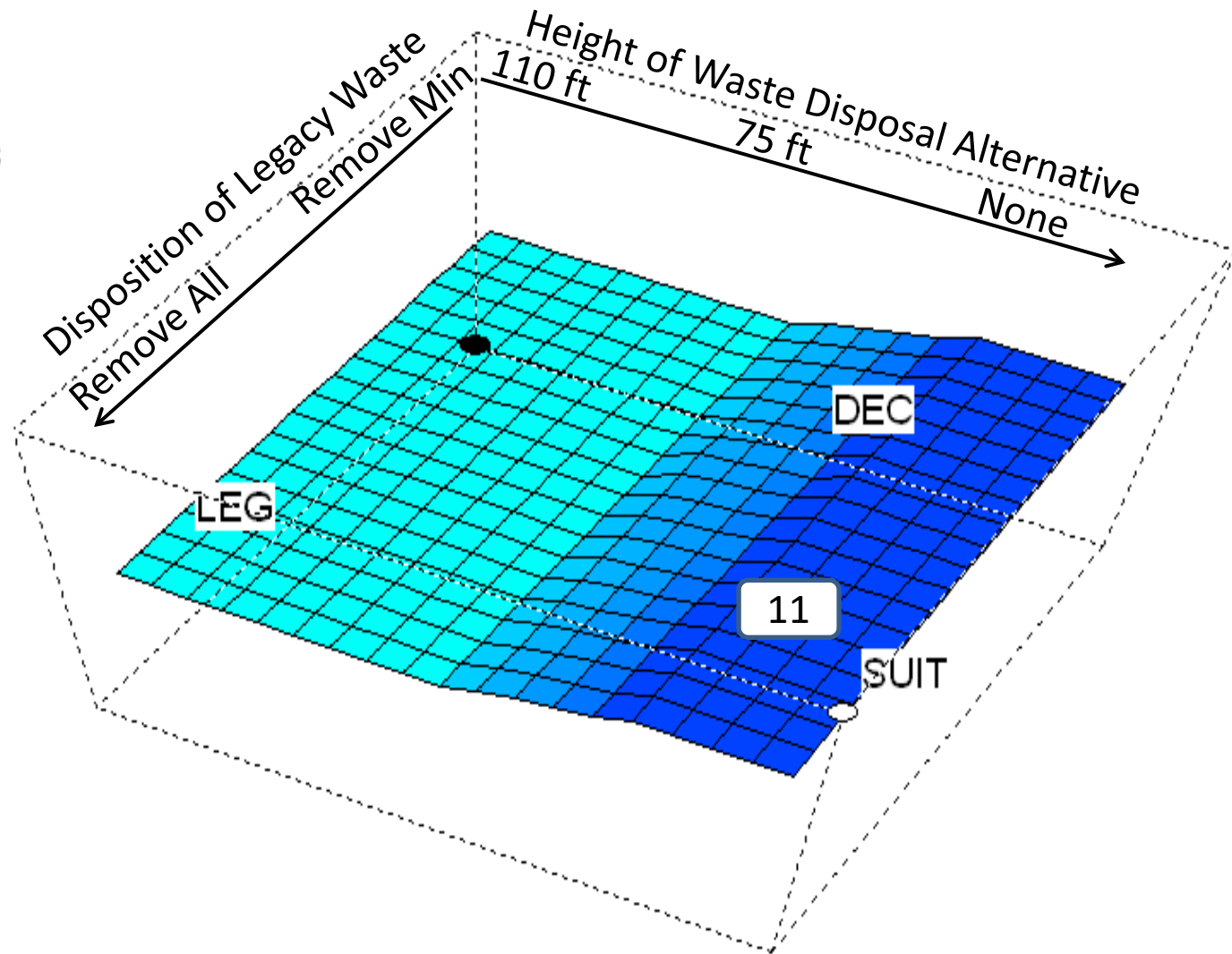
Group 1. Scenario 11. Institutional Controls. All WMA.

In:

- 1. LU: 918 No Units
- 2. WMA: 750 No Units
- 3. DEC: 0 to 1000 No Units
- 4. LEG: 0 to 1000 No Units

Out:

SUIT: 0 to 1000 No Units

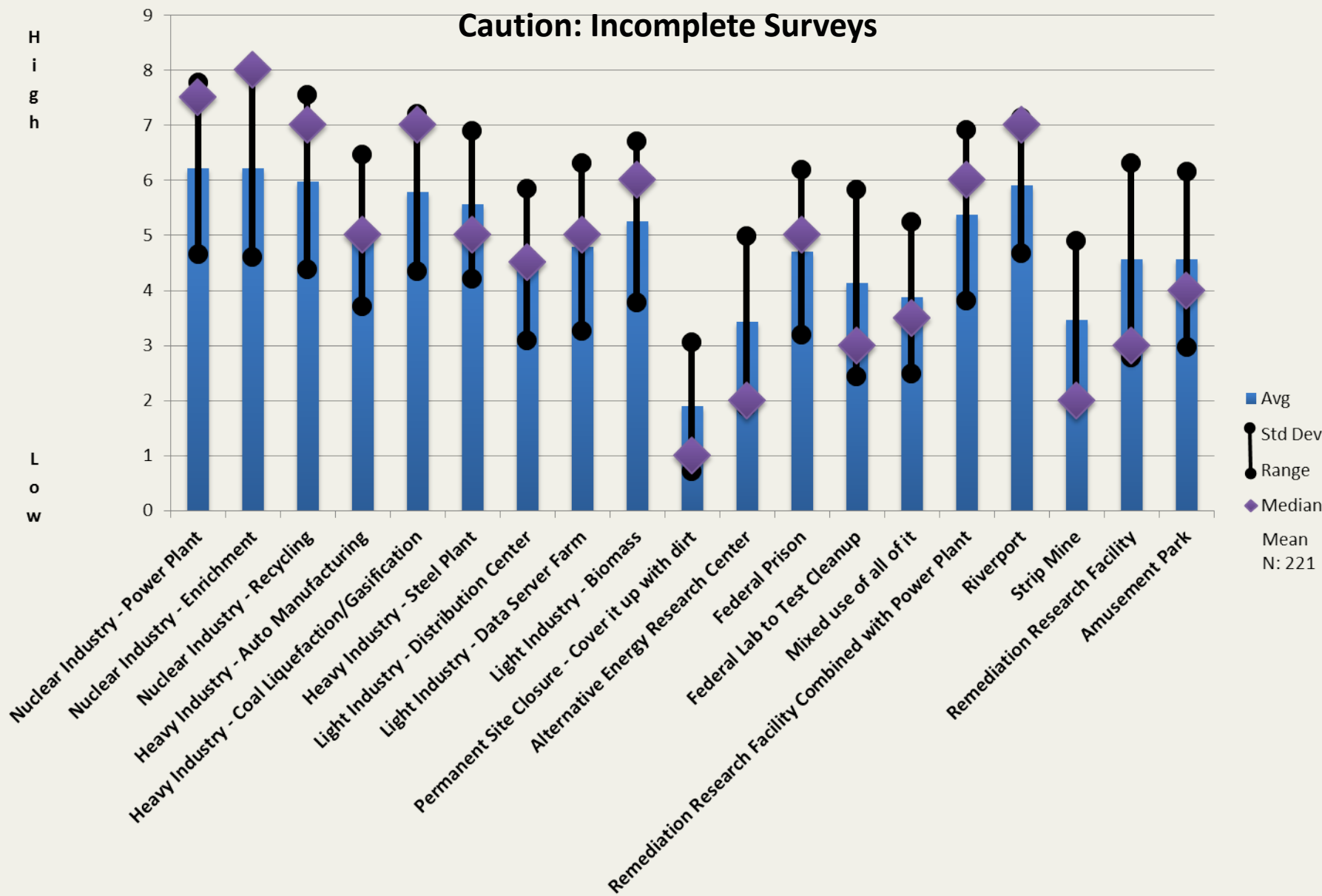


Land Use Preference Ratings

Caution: Incomplete Surveys

H
i
g
h

L
o
w



■ Avg
● Std Dev
— Range
◆ Median
Mean
N: 221

Conclusions

- There are three significant perspectives on the land use/cleanup question in Paducah.
- Two perspectives are fundamentally different and largely single-issue: Economic Development vs. Risk/Exposure Minimization
- A third group considers balancing benefits and risks. This group may be most productive area to focus attention.
- Process Matters: Distributive justice and procedural justice are not the same. A process can have options with **low** distributive justice but **high** procedural justice i.e. people don't have to like the options to approve of the decision process, which improves the likelihood of agreement.